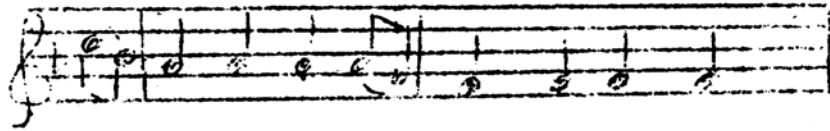
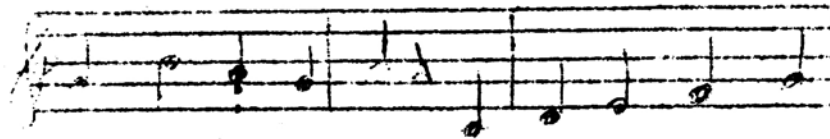


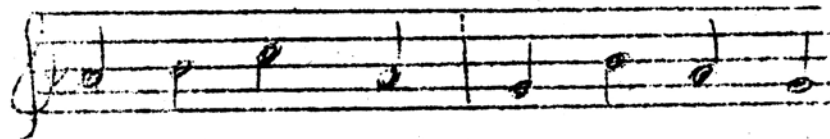
Santiglauselied



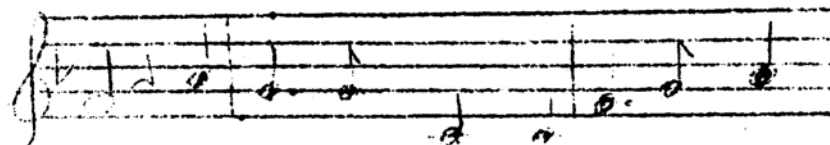
Es schnei-~~e~~-let, es schnei-e-let, es



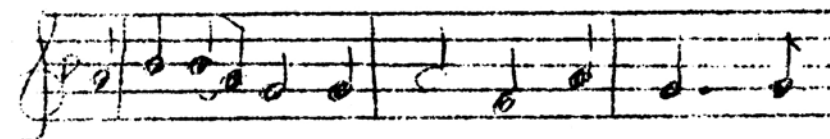
isch gar grusig kalt; Dr San-ti-glaus, dä



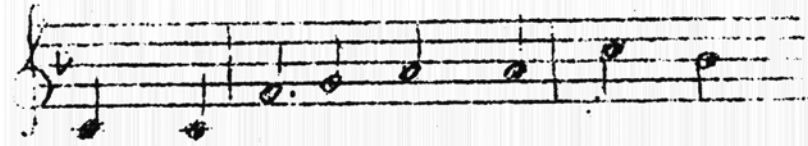
paggt si Sagg, stampft durch dr Schnee im



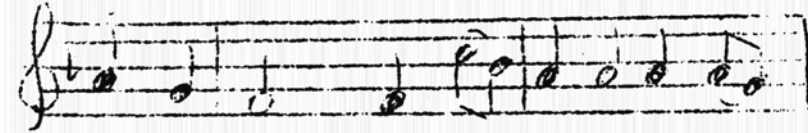
Wald. Aer het viel Guets do in sim Sagg



für al-li lie-be Kin-der. Es isch scho



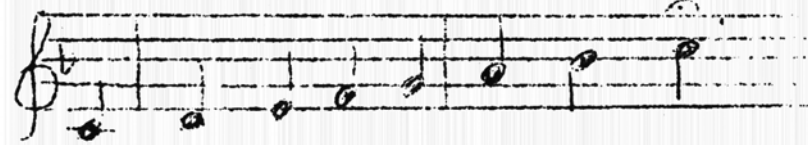
finsch-ter in däm Wald, drum lauft er



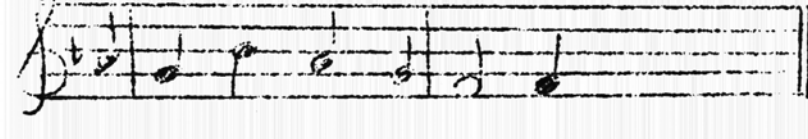
jetzt au gschwin-der. Und al-li Kin-der



war-te scho, stöhn hin-ter ih-re Tü-re;



was bringt dr San-tig-laus ächt Guets,



Läb-kue-che Nuss und Bi -re ?